


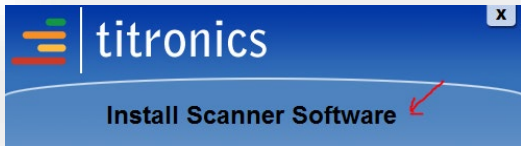
## Tytron C-5000 FAST SETUP

Insert the Flash Drive with the C-5000 software on it. Double click Titronics.exe below:

Setup.dat	9/10/2014 2:34 PM	DAT File	1 KB
Software Install - Data Base Procedures.doc	1/7/2016 3:23 PM	Microsoft Word 9...	852 KB
<b>Titronics.exe</b> ←	10/11/2013 1:12 PM	Application	852 KB
TytronManual.pdf	8/11/2016 1:44 PM	Adobe Acrobat D...	12,385 KB

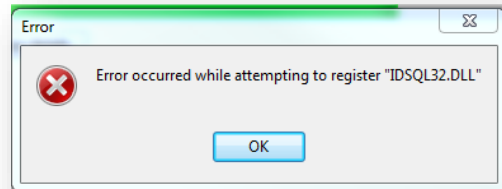
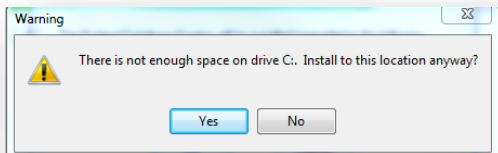
### NOTICE

Install Icon above may just appear as  Titronics without the .exe extension on your screen.

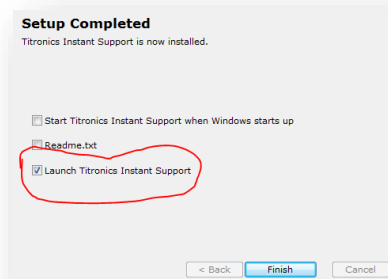


Double click Install Scanner Software:  
Accept all the defaults.

Ignore these warnings as shown below. If they come up – choose Yes or OK

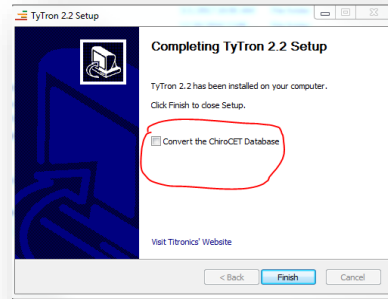


After Titronics Instant Support is loaded you may **uncheck** the Launch option if you don't want to connect immediately (you should not need to unless your C-5000 scanner doesn't connect automatically over the internet).



## Tytron C-5000 FAST SETUP

You don't need to check "Convert .." on the next screen (unless you have been using ChiroCET software and want to save the old data base) just click **Finish**.



Double click the Tytron 2.2 icon to launch the program.

Once it loads and starts, click Setup (top left) and enter:

Doctor Information	
Doctor's Name:	roger
Address Line 1:	Default Office
Address Line 2:	Default Office
Registration Number:	134251378

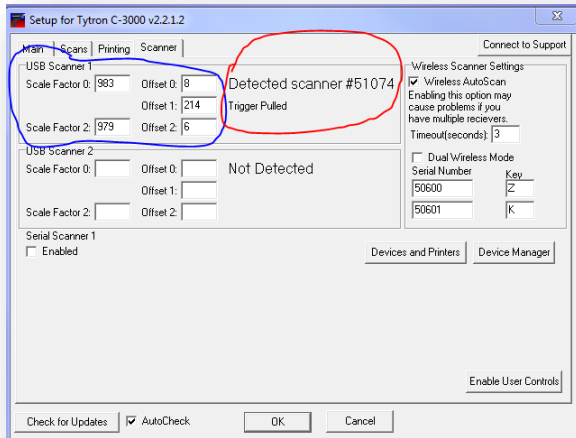
The data in the Doctor Information field will appear in reports and is necessary for service calls and registration of the scanner.

Use Registration #: **134251378**

**NOW** Click **OK**, go back into **Setup > Scanner** tab

Connect the scanner to the USB port on the computer. In the USB Scanner 1 box it should look like the following picture after the software has recognized the C-5000 driver if there is a connection to the Internet (this may take a few minutes). When you see the connection has been confirmed (Detected scanner # 5xxxx), pull the trigger and the screen should read: **Trigger pulled**

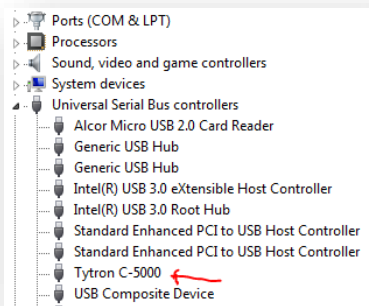
## Tytron C-5000 FAST SETUP



If **Trigger Pulled** appears when the trigger is pulled proceed to next step, if you are not seeing **Trigger Pulled** refer to the instructions for Loading Drivers.

The calibration numbers – **Scale Factors** and **Offsets** should agree with the numbers in the calibration report that came with your scanner.

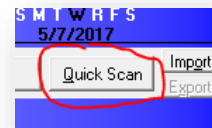
If all looks correct, Click **OK** to return to the home screen to perform a test scan.



### NOTICE

The C-5000 scanner will show up as Tytron C-5000 in the Device manager under **Universal Serial Bus Controllers**:

On the home screen CLICK [QUICK SCAN] in the upper right corner of the screen.



If a black scan screen comes up and pulling the trigger displays a distance indicator, you should be able to scan under your chin or any warm target (like your computer screen) to confirm function.

**Congratulations, you have successfully installed your software and C-5000 scanner!**

For additional help see FAQ's on the [www.Titronics.com](http://www.Titronics.com) website or call 319 545 7377